

## Anti-Harassment and Bullying

The University condemns harassment as an unacceptable form of behavior and has a service to help staff and students who are being harassed or bullied

Go to the University's advice on harassment website

<http://www.admin.ox.ac.uk/eop/harassmentadvice/>

Contact the University's confidential harassment line and ask for a referral to someone outside the department

01865 270760

[harassment.line@admin.ox.ac.uk](mailto:harassment.line@admin.ox.ac.uk)

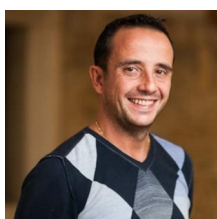
Talk to the Student Advice Service

01865 288466

[advice@ousu.org](mailto:advice@ousu.org)

Talk to one of the Psychiatry harassment advisors below—they're here to support everyone in the department and help with difficult experiences, bullying or harassment.

*The harassment advisors are still available during this time when many of us are working from home so please do contact them if you need support.*

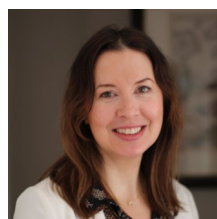


**Nico Filippini**

MRI Manager, OHBA

01865 618215

[nicola.filippini@psych.ox.ac.uk](mailto:nicola.filippini@psych.ox.ac.uk)



**Rebecca Murphy**

Senior Research Clinician, Wellcome Building

01865 613116

[rebecca.murphy@psych.ox.ac.uk](mailto:rebecca.murphy@psych.ox.ac.uk)



**Catherine Harmer**

Professor of Cognitive Neuroscience, Neurosciences

01865 618326

[catherine.harmer@psych.ox.ac.uk](mailto:catherine.harmer@psych.ox.ac.uk)



**Erdem Pulcu**

Postdoctoral Researcher, Neurosciences

01865 223601

[erdem.pulcu@psych.ox.ac.uk](mailto:erdem.pulcu@psych.ox.ac.uk)



**Marieke Martens**

Research Assistant, Neurosciences

01865 618338

[marieke.martens@psych.ox.ac.uk](mailto:marieke.martens@psych.ox.ac.uk)

